

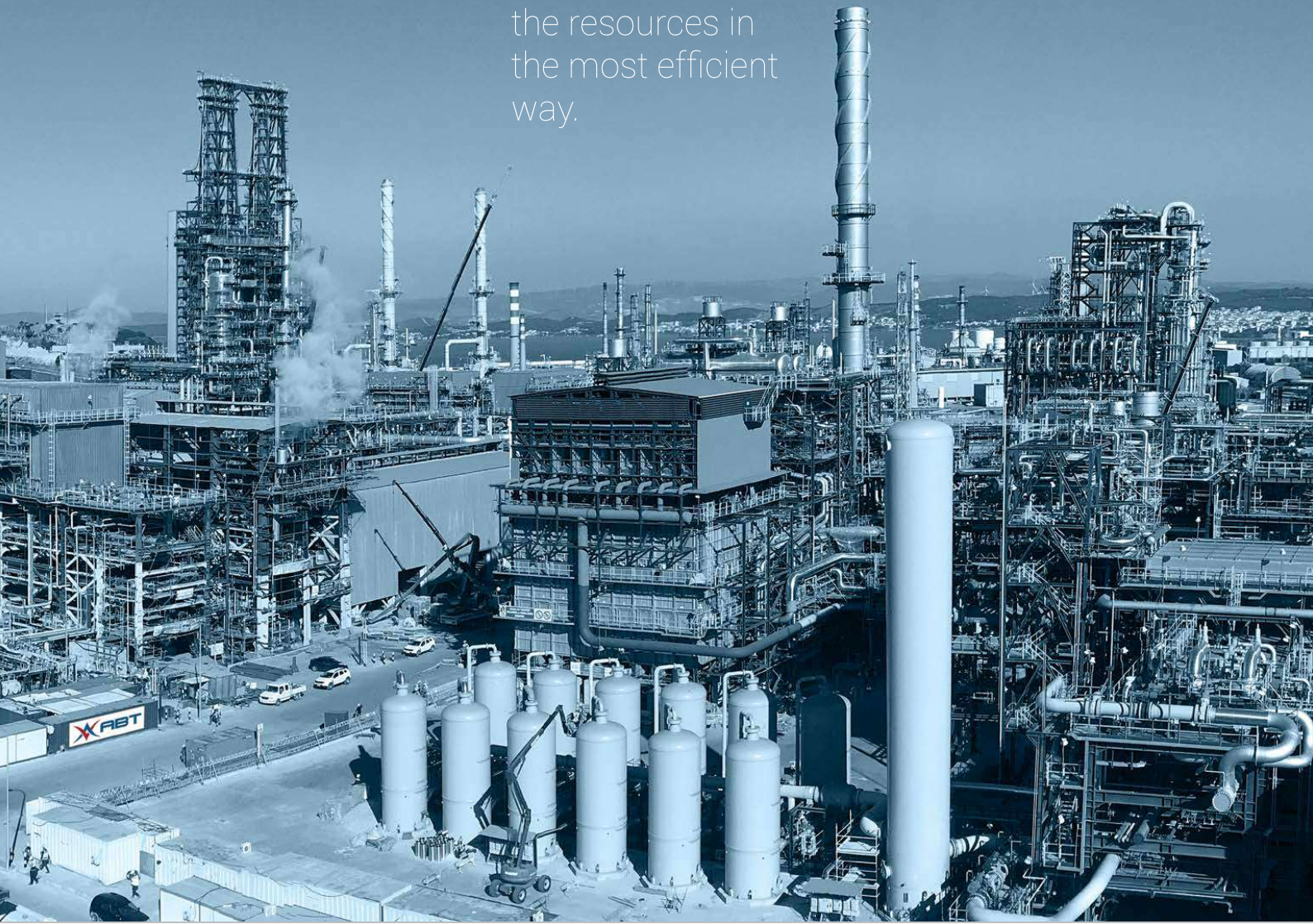


CONSTRUCTION & ENGINEERING

ALL ABOUT TRUST



ABT continues to
work for the good
of humanity, by
prioritizing people and
environment, with its
highest HSE and quality
culture, and using
the resources in the
most efficient
way.





Contents

inside

06	Welcome
08	Services
10	QHSE Management
12	Projects
50	Executive's References
60	Clients
62	World of ABT

We have started to
leave our footprint
since 2015



CONSTRUCTION & ENGINEERING

with the principle
of creating value
and sharing
these values
together.

Welcome

welcome to ABT

Since our establishment, we have concentrated on being an effective team with our clients, partners, subcontractors and employees in order to leave our footprint with the principle of creating value and sharing these values together.

Although we have been crossing a challenging era in Construction Industry under very tough competition with higher Client expectations, we have succeeded to grow, improved our capabilities and most importantly added valuable teammates to ABT family.

ABT's philosophy is transparent management, project-oriented approach and employing high caliber dedicated staff. ABT has been training and improving its workforce as per this understanding and according to its growth strategy to execute engineering, procurement and construction (EPC) projects. In this respect, we appreciate and respect our team, and aim to provide an attractive working environment and career growth opportunities for ABT employees.

While executing the projects, we never compromise our commitments for Health, Safety, Environment, Ethics and Quality, and we build a transparent and open relationship with our clients based on mutual trust and respect.

In the light of our above philosophy and vision, ABT is ready to execute future projects with the utmost motivation, expertise and dedication.



Services

what we do?

ABT offers a wide range of professional engineering services including EPC projects for developing plants, mechanical systems or products. Whether providing complete engineering services or engineering support such as engineering management and detail engineering, ABT has engineering capabilities to meet your needs together with its solution partners.

As it's core business with full of successful 25 years experience in Construction, ABT serves for the needs and the expectations of its clients by providing comprehensive solutions tailored to your unique projects.

CONSTRUCTION SERVICES

- Civil Works, Infrastructure and UG Installation
- Structural Steel Fabrication and Installation
- Storage Tanks Prefabrication and Installation
- Mechanical Equipment Installations:
 - Rotating Equipment such as Turbine, Compressor, Reciprocating Gas Engine, Pumps, etc.
 - Static Equipment such as Pressure Vessels, Drums, Reactors, Heat Exchangers and Skid-mounted equipment.
 - Packages such as HRSG, Reformer, Heaters, Boiler, Cooling Tower, Air Cooled Condensers, Blowers, etc.
- Piping & Support Prefabrication and Installation
- Sand Blasting & Painting
- Insulation Works & Refractory Lining & Fireproofing
- Electrical and Instrumentation Installation

ENGINEERING SERVICES

- Conceptual Design
- Basic Design
- Front End Engineering Design (FEED)
- Detail Design (Execution phase)
Incl.
 - Project Management
 - Civil Engineering
 - Mechanical Engineering
 - Process Engineering
 - Electrical Engineering
 - Instrument and Control (I&C) Engineering
 - Start-up Services (Testing and Commissioning Assistance)

project
management

construction

engineering

ISO
9001

ISO
14001

installation

design

fabrication

services

ISO
45001

ISO
3834-2

procurement

commissioning

start-up

HSE Management

health, safety and environment

At ABT, we are committed to ensuring the health and safety of our workforce and stakeholders as well as complying with all legal requirements in terms of HSE. We implement the Health and Safety culture across our projects and believe that it is the responsibility of everyone from Senior Management to all our workers .

We operate a robust Health, Safety and Environmental management system which is evaluated for continual improvement in accordance with **ISO 45001:2018** and **ISO 14001:2015**.

Sustainability and the Environment

We recognize the importance of the natural environment and the significance of the ecosystem's sustainability and fully comply with all sustainability and environmental legislations. ABT is dedicated to preventing pollution, reducing wastes and minimizing the adverse impacts of our activities on the environment.

Quality Policy & Commitment

effective quality management

Primary objective of ABT is to satisfy Clients needs, in order to get high level of effectiveness and efficiency of the processes in each phase of the project and to meet the Client expectations. ABT achieves such an objective by means of the implementation of his Quality Management System, in compliance with the International Standard **ISO 9001:2015**, based on the following strategic guidelines highlighted in the Quality Policy.

The scope of the certificate is applicable to the following activities:

- project management,
- design,
- engineering,
- procurement,
- construction,
- fabrication,
- installation,
- commissioning and start-up.



PROJECTS

Oil & Gas Plants

- Sakarya Gas Field Development Project, MEG TEG Site Completion Works, Filyos, Zonguldak, Turkey
- Star Refinery Project, Piping Works in Hydrocracker Unit & Pre-commissioning, Commissioning Assistance Works for Diesel Lines for TSGL, Aliaga, Izmir, Turkey
- Star Refinery Project, Piping and Electrical & Instrumentation Supervision Services for TSGL, Aliaga, Izmir, Turkey
- Star Refinery Project, Flare Area, Tank Farm Piping Works, Aliğa, İzmir, Turkey
- Star Refinery Project, Hazardous Waste Storage Building EPC Works, Aliğa, İzmir, Turkey
- Tanap Project Compressor Station 1 (CS1) Construction Works, Damal, Ardahan, Turkey
- Tanap Project Metering Station 1 (MS1) Construction Works, Posof, Ardahan, Turkey
- Tanap Project Compressor Station 1 (CS1) Substation Construction Works, Damal, Ardahan, Turkey
- Tanap Project Metering Station 1 (MS1) Substation Construction Works, Posof, Ardahan, Turkey

Petrochemical Plants

- Gemlik Fertilizer New Urea and UAN Plant Project, Material Handling and Preservation Works for Technimont, Gemlik Bursa, Turkey
- Gemlik Fertilizer New Urea and UAN Plant Project, Supervision Services for Technimont, Gemlik Bursa, Turkey
- Gemlik Fertilizer New Urea and UAN Plant Project, Construction of Underground Works for Technimont, Gemlik Bursa, Turkey
- Poti Port, Methanol Storage Terminal Plant Upgrade Works (Phase II), Poti, Georgia
- Poti Port, Methanol Storage Terminal Plant (Phase I), Poti, Georgia

Power Plants

- Boufarik 750 MW Simple Cycle Power Plant Construction Works, Algeria

Building Construction Works

- Star Refinery Project, Administration and Management Building of the Refinery, Phase II Construction Works, Aliğa, İzmir, Turkey
- Tanap Project CS1 Civil&Architecture Works of Buildings, Damal, Ardahan, Turkey
- Tanap Project MS1 Civil&Architecture Works of Buildings, Posof, Ardahan, Turkey

EPC Early Works

- Gemlik Fertilizer New Urea and UAN Plant Project, EPC Temporary Construction Facilities Works, Gemlik Bursa, Turkey
- Tanap Project Compressor Station 1 (CS1) EPC Camp Construction Works, Damal, Ardahan, Turkey
- Tanap Project Metering Station 1 (MS1) EPC Camp Construction Works, Posof, Ardahan, Turkey



SAKARYA FIELD DEVELOPMENT PROJECT
MEG TEG SITE COMPLETION WORKS

Location	Filyos, Zonguldak, Turkey
Contractor	(Confidential)
Client	Turkish Petroleum (TPAO)
Duration	Oct 22 -
Scope	Piping, Equipment and E&I Installation Works

- ✓ **the largest** gas discovery in the Black Sea
- ✓ **the first** deepwater gas field discovery in Turkiye



✓ **425.000 safe manhours** are achieved in Project.







STAR REFINERY PROJECT PIPING AND COMMISSIONING ASSISTANCE WORKS

Location	Aliaga, Izmir, Turkey
EPC Contractor	TSGI (Tecnicas Reunidas, Saipem, GS, Itochu JV)
Owner	Star Rafineri A.S. (SOCAR)
Project Duration	10 months (Jul 18 - May 19)
Scope	Piping Works in Hydrocracker Unit & precommissioning works, commissioning assistance works of diesel lines.



✓ **1 million safe manhours** are achieved in Star Refinery Project.



Oil & Gas Plants

STAR REFINERY PROJECT MECHANICAL AND ELECTRICAL INSTRUMENTATION SUPERVISION WORKS (INCLUDING COMMISSIONING SUPERVISION)

Location	Aliaga, Izmir, Turkey
Contractor	TSGI (Tecnicas Reunidas, Saipem, GS, Itochu JV)
Owner	Star Rafineri A.S. (SOCAR)
Project Duration	13 months (Apr 18 - May 19)





Oil & Gas Plants

STAR REFINERY PROJECT FLARE AND TANK FARM AREA PIPING WORKS

Location	Aliaga, Izmir, Turkey
Contractor	Gemont A.S.
EPC Contractor	TSGI (Tecnicas Reunidas, Saipem, GS, Itochu JV)
Owner	Star Rafineri A.S. (SOCAR)
Project Duration	20 Months (May 17 - Jan 19)
Scope	Piping Works for Flare Area and Tank Farm





Oil & Gas Plants

STAR REFINERY PROJECT FLARE AND TANK FARM AREA PIPING WORKS



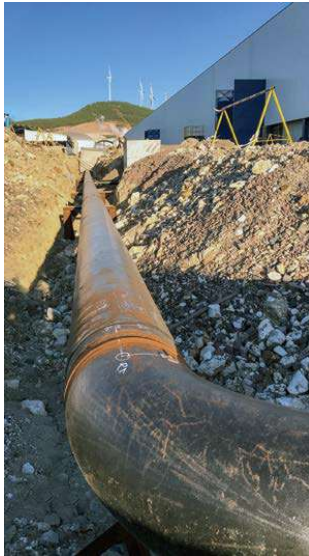




STAR REFINERY HAZARDOUS WASTE STORAGE BUILDING PROJECT

Location	Aliaga, Izmir, Turkey
EPC Contractor	Elif Insaat
Client/Owner	Star Refinery (SOCAR)
Project Duration	8 months (Oct 16 - May 17)
Participation	ABT as Project Management Contractor
Scope	Consultancy for Engineering, Procurement and Construction (EPC) Works of Hazardous Waste Storage Building





STAR REFINERY HAZARDOUS WASTE STORAGE BUILDING FIRE FIGHTING SYSTEM PIPING WORKS

Location	Aliaga, Izmir, Turkey
Contractor	Elif Insaat
Client	Star Refinery (SOCAR)
Project Duration	4 Months (Agu 17- Dec 17)
Scope	Piping Fabrication and Installation Works

Oil & Gas Plants

TANAP PROJECT

COMPRESSOR STATION 1 (CS1) CONSTRUCTION WORKS

Location	Damal, Ardahan, Turkey
Contractor	Tekfen Construction
EPCM	Worley Parsons
Owner	TANAP (BOTAS, SOCAR, BP)
Project Duration	32 Months (Jun 16 - Dec 18)
Participation	ASF ABT Joint Venture



✓ **2.5 million safe manhours** are achieved in TANAP Project.





Oil & Gas Plants

TANAP PROJECT METERING STATION 1 (MS1) CONSTRUCTION WORKS

Location	Posof, Ardahan, Turkey (Georgia Border)
Contractor	Tekfen Construction
EPCM	Worley Parsons
Client	TANAP (BOTAS, SOCAR, BP)
Project Duration	19 Months (Jun 16- Dec 17)
Participation	ASF ABT Joint Venture





TANAP PROJECT
CS1 SUBSTATION CONSTRUCTION WORKS

Location	Damal, Ardahan, Turkey
Contractor	Tekfen Construction
EPCM	Worley Parsons
Owner	TANAP (BOTAS, SOCAR, BP)
Participation	ASF ABT Joint Venture
Scope	Construction of Substation Building



TANAP PROJECT
MS1 SUBSTATION CONSTRUCTION WORKS

Location	Posof, Ardahan, Turkey
Contractor	Tekfen Construction
EPCM	Worley Parsons
Owner	TANAP (BOTAS, SOCAR, BP)
Participation	ASF ABT Joint Venture
Scope	Construction of Substation Building



GEMLIK FERTILIZER NEW UREA AND UAN
PLANT PROJECT
MATERIAL HANDLING AND PRESERVATION WORKS

Location	Gemlik Bursa Turkey
EPC Contractor	Technimont S.p.A.
Owner	GEMLIK GUBRE (YILDIRIM GROUP)
Project Duration	34 months (Jul 21 -)
Scope	Material Handling and Preservation Works



GEMLIK FERTILIZER NEW UREA AND UAN
PLANT PROJECT
SUPERVISION WORKS

Location	Gemlik Bursa Turkey
EPC Contractor	Technimont S.p.A.
Owner	GEMLIK GUBRE (YILDIRIM GROUP)
Project Duration	19 months (Feb 22 - Aug -23)
Scope	Civil, Mechanical, E&I Supervision Works

Petrochemical Plants

GEMLIK FERTILIZER NEW UREA AND UAN PLANT PROJECT CONSTRUCTION OF UNDERGROUND WORKS

Location	Gemlik Bursa Turkey
EPC Contractor	Technimont S.p.A.
Owner	GEMLIK GUBRE (YILDIRIM GROUP)
Project Duration	11 months (May 22 - April 23)
Scope	Underground Construction Works





Petrochemical Plants

POTI PORT PROJECT METHANOL STORAGE TERMINAL PLANT UPGRADING WORKS (PHASE II)

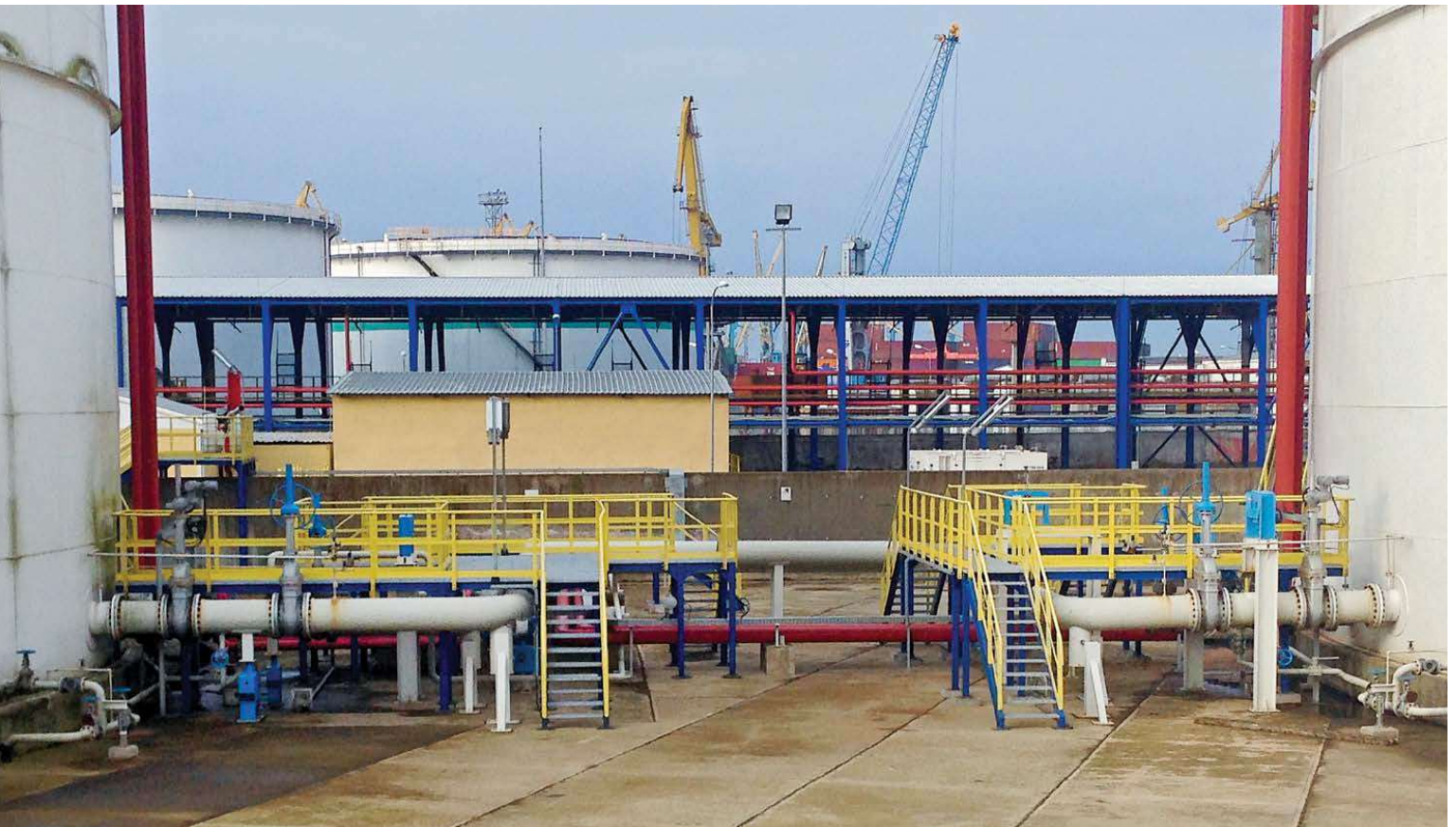
Location	Poti, Georgia
Owner	Channel Energy-Georgia
Project Duration	4 months (Feb 17 - May 17)
Participation	Consultancy and Engineering
Scope	Phase 1 completed by ABT. Engineering Works of Upgrading of Methanol Storage Terminal Plant





POTI PORT PROJECT METHANOL STORAGE TERMINAL PLANT (PHASE I)

Location	Poti, Georgia
Owner	Channel Energy-Georgia
Project Duration	4 months (Jan 16 - Apr 16)
Participation	Consultancy and Engineering
Scope	Review and Evaluation of Process Engineering completed by Foster Wheeler Bimaş Engineering, Procurement and Construction Valuation of Methanol Storage Terminal Project





Power Plants

BOUFARIK

750 MW SIMPLE CYCLE POWER PLANT

Location	Boufarik, Algeria
EPC Contractor	GAMA Power Systems
Owner	Sonelgaz
Project Duration	24 months (Nov 15 - Nov 17)
Participation	ABT as Civil Works Subcontractor
Project Configuration	3xGE 9FA Gas Turbines
Scope	Underground construction works Building architectural works



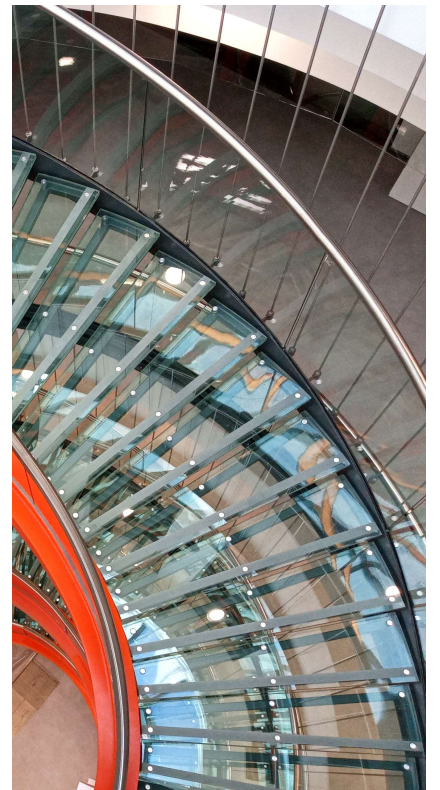


Building Construction Works

STAR REFINERY PROJECT ADMINISTRATION & MANAGEMENT BUILDING PHASE II CONSTRUCTION WORKS

Location	Aliaga, Izmir, Turkey
Owner	Star Rafineri A.S. (SOCAR)
Project Duration	12 months (Mar 19 – Mar 20)
Scope	Engineering review, Procurement and Construction (ePC) of building incl. architectural, steel, mechanical, electrical and commissioning works except civil construction works





Building Construction Works

TANAP PROJECT CS1 BUILDING CONSTRUCTION WORKS

Location	Damal, Ardahan, Turkey
Contractor	Tekfen Construction
EPCM	Worley Parsons
Owner	TANAP (BOTAS, SOCAR, BP)
Project Duration	32 Months (Jun 16-Dec 18)
Participation	ASF ABT Joint Venture
Scope	Civil and Architecture Works of Workshop & Warehouse, Administration & Control Building, Hazardous Waste&Storage Building, Utility Building, Security Building, Canteen Building and etc.





TANAP PROJECT

MS1 BUILDING CONSTRUCTION WORKS

Location	Posof, Ardahan, Turkey
Contractor	Tekfen Construction
EPCM	Worley Parsons
Owner	TANAP (BOTAS, SOCAR, BP)
Project Duration	19 Months (Jun 16-Dec 17)
Participation	ASF ABT Joint Venture
Scope	Civil and Architecture Works of Workshop & Warehouse, Administration & Control Building, Hazardous Waste&Storage Building, Utility Building, Security Building, Canteen Building and etc.



EPC Early Works

GEMLIK FERTILIZER NEW UREA AND UAN PLANT PROJECT TEMPORARY CONSTRUCTION FACILITIES AND SERVICES WORKS

Location Gemlik, Bursa, Turkey
Contractor Technimont S.p.A.
Client GEMLIK GUBRE (YILDIRIM GROUP)
Scope Engineering, Procurement and Construction (EPC) Works for TCF underground civil, mechanical and electrical works and related landscaping & Maintenance Works incl. Auxiliary Services

Total Area 47.700 m²
Total Closed Area 2.700m²





EPC Early Works



TANAP PROJECT METERING STATION 1 (MS1) CAMP CONSTRUCTION WORKS

Location	Ardahan, Turkey (Georgia-Turkgozu border)
Contractor	Tekfen Construction
Client	TANAP (BOTAS, SOCAR, BP)
Participation	ASF ABT Joint Venture
Scope	Engineering, Procurement and Construction Works (EPC) for overall camp underground civil, mechanical and electrical works and related landscaping
Camp Capacity	450 personnel
Total Area	27.000 m ²
Total Closed Area	8.700m ²





TANAP PROJECT
COMPRESSOR STATION 1 (CS1)
CAMP CONSTRUCTION WORKS

Location	Damal, Ardahan, Turkey
Contractor	Tekfen Construction
Client	TANAP (BOTAS, SOCAR, BP)
Participation	ASF ABT Joint Venture
Scope	Engineering, Procurement and Construction Works (EPC) for overall camp underground civil, mechanical and electrical works and related landscaping
Camp Capacity	850 personnel
Total Area	55.000 m ²
Total Closed Area	16.200m ²







EXECUTIVE'S REFERENCES

Oil & Gas Plants

- Qatargas Unit 3 & 4 Project, Qatar
- Shell Pearl GTL Project, Air Separation Units, Qatar
- Saudi Aramco Hawiyah NGL Recovery Plant, Gas Treatment And Compression Facilities, KSA
- Yamal LNG Production Plant, Russia

Power Plants

- Riga 420 MWe Combined Cycle Power And 270 MWT Thermal Plant, Latvia
- Al Khaliij 1400 MW Thermal Power Plant Project, Libya
- 330 MW Zawiya Simple Cycle Power Plant Project, Libya
- 478 MW Marmara Ereglisi Combined Cycle Power Plant Project, Turkey
- Zenger 432MW Simple Cycle Power Plant, Turkmenistan

Petrochemical Plants

- Tupras Izmir Refinery CCR And Isomerization Units Project , Turkey
- Caustic Soda Plant Project, KSA
- Ammoniac and Hydrogen Production Plant, Togliatti, Russia

Pipeline Projects

- DISI Water Conveyance Line Project, Jordan
- Great Man-Made River Project, Sair-Sirte / Tazerbo-Bingazi Section Cathodic Protection Works, Libya

Other Industrial Plants

- EPCC Cement Plant Project, KSA

Oil & Gas Plants

QATARGAS UNIT 3 & 4 PROJECT

Location	Ras Laffan, Qatar
Contractor	GAMA Qatar Co. W.L.L.
Client	CTJV (Ghiyoda-Japan, Technip-France Consortium)
Owner	Qatargas, Conoco-Phillips, Shell ACS
Project Duration	57 months (Jan 06 - Oct 10)
Participation	Deputy Managing Director and Project Director
Scope	Construction Works: <ul style="list-style-type: none">▪ 86.813 m³ concrete pouring▪ 16.000ton steel erection▪ 16.500 ton eguipment installation▪ 1,440.000 WDI piping prefabrication and erection works▪ All related electrical and instrumenit installation works▪ All precommissioning activities and site assistance to commissioning team



YAMAL LNG PRODUCTION FACILITY CONSTRUCTION OF CWP3B PACKAGE

Location	Yamal, Sabetta Region, Russian Federation
Contractor	REGA JV (GAMA - Renaissance Heavy Industries)
Client	JSC Yamal LNG / South Tambey LNG
Project Duration	39 months (Aug 15 - Dec 18)
Participation	C00 of Renaissance Heavy Industries and Project Board of Contractor (resigned after Contract signature)
Scope	<ul style="list-style-type: none">▪ Module Installation and Connection Works for Utility and Offsite▪ Mechanical Works▪ Piping Works▪ EPC (Engineering-Procurement-Erection) Tanks and Buildings▪ Electrical and Instrumentation Works

SHELL PEARL GTL PROJECT AIR SEPARATION UNITS

Location	Ras Laffan, Qatar
Contractor	GAMA Qatar Co. W.L.L.
Client	Linde AG-Linde Eng., Germany
Owner	Qatar Shell GTL Ltd
PMC	JGC and KBR
Project Duration	46 months (Jun 07 - Mar 11)
Participation	Deputy Managing Director, Project Director and Site Manager
Scope	<p>Construction Works:</p> <ul style="list-style-type: none"> ▪ 50.400m³ concrete pouring ▪ 8.500ton steel erection ▪ 36.000 ton equiptment installation ▪ 520.000 WDI piping prefabricationand erection works ▪ 82.610m² painting&insulation works ▪ Alirelated elecirical and instrumenit installation works ▪ All precommissioning activities and site assistance to commissioning team



HAWIYAH NGL RECOVERY PLANT GAS TREATMENT AND COMPRESSION FACILITIES

Location	Al-Hasa Region, Saudi Arabia
Contractor	GAMA Al-Moushegah Arabia Ltd.
Client	Saipem (ex-Snamprogetti), Italy
Owner	Saudi Aramco
Project Duration	36 months (Dec 05 - Dec 08)
Participation	Site Manager, Technical Office Manager
Scope	<p>Construction Works:</p> <ul style="list-style-type: none"> ▪ 13.500 ton steel erection ▪ 11.470 ton equiptment installation ▪ 674.000 Dia-inches piping prefabrication and erection works (22.901 tons piping) ▪ 184.000 m² painting works ▪ 44.000 m² insulation works ▪ All precommissioning activities and site assistance to commissioning team

Power Plants



RIGA

420 MWe COMBINED CYCLE POWER AND 270 MWt THERMAL PLANT

Location	Riga, Latvia
EPC Contractor	GAMA Power Systems
Client/Owner	AS Latvenergo
Project Duration	41 months (Apr 10 - Sept 13)
Participation Scope	Deputy Managing Director, Procurement Manager EPC Works for 420 MWe Combined Cycle Power and 270 MWt Thermal Plant includes Engineering Management, Procurement of all Equipment and Systems, Construction Management and Supervision, Commissioning and Start-up works
Project Config.	1 - 1 multishaft Gas Turbines: GE Frame 9FB.03 Steam Turbine: Siemens STG



AL KHALIJ

1400 MW THERMAL POWER PLANT

Location	Al Khalij, Libya
Contractor	GAMA Endüstri AŞ
Client	General Electric Company-Libia (GECOL)
Participation Scope	Deputy Managing Director Construction Works: <ul style="list-style-type: none">▪ 160.000 m³ concrete pouring▪ 11.500 ton steel erection▪ 4.000 ton tank installation

ZERGER

432 MW SIMPLE CYCLE POWER PLANT

Location	Serdarabat Region, Turkmenistan
Contractor	Renaissance Heavy Industries
Client	Sumitomo Corporation, Japan
Participation	COO of Renaissance Heavy Industries (resigned after Contract signature)





ZAWIYA

330 MW SIMPLE CYCLE POWER PLANT

Location	Zawia, Libya
Contractor	GAMA Endüstri AŞ
Client	Alstom Ltd., Switzerland
Owner	GE Electric Company - Libya (GECOL)
Project Duration	13 months (Oct 04 - Nov 05)
Participation	Site Manager
Scope	Construction Works: <ul style="list-style-type: none"> ▪ 5.085 m³ concrete pouring ▪ 1000 ton steel erection ▪ 3.100 ton equipment installation ▪ 182 ton piping works (9.198 WDII) ▪ All related electrical and instrument installation works ▪ All precommissioning activities and site assistance to commissioning team
Project Config.	Simple Cycle 2xGT
Gas Turbines	ALSTOM 13E



MARMARA EREGLİSİ

478 MW COMBINED CYCLE POWER PLANT

Location	Tekirdağ, Turkey
Contractor	GAMA Endüstri AŞ
Client	Enron-USA & GAMA Consortium
Owner	Trakya Elektrik Üretim ve Ticaret AŞ
Project Duration	26 months
Participation	QA/QC Manager
Scope	Construction works of 2+1 multishaft configuration: <ul style="list-style-type: none"> ▪ 23.600 m³ concrete pouring ▪ 2.582 ton steel erection ▪ 1.158 ton storage tank ▪ 4.280 ton other steel, tank, piping, etc. ▪ 1.000 ton equipment installation ▪ 650 ton process piping works ▪ All related electrical and instrument installation works ▪ All precommissioning activities and site assistance to commissioning team

Petrochemical Plants



TOGLIATTI AMMONIAC & HYDROJEN PRODUCTION PLANT

Location	Togliatti, Russia
Contractor	Renaissance Heavy Industries
Client	Linde Azot Togliatti LLC
Participation	COO of Renaissance Heavy Industries (resigned after Contract signature)



TUPRAS IZMIR REFINERY CCR AND ISOMERIZATION UNITS

Location	Izmir, Turkey
Contractor	Foster Wheeler Italy and GAMA Consortium
Owner	TÜPRAŞ
Project Duration	21 months
Participation	QA/QC Manager and Site Manager
Scope	Construction Works: <ul style="list-style-type: none">▪ 20.000 m³ concrete pouring,▪ 4.200ton steel erection,▪ 7.500ton equipment installation,▪ 6.000ton piping prefabrication and erection works,▪ 347.000 m² painting works,▪ 68.000 m² insulation works,▪ All precommissioning activities and site assistance to commissioning team.



JUBAIL CAUSTIC SODA PLANT

Location	Jubail, Saudi Arabia
Contractor	GAMA Industry Arabia, KSA
Client	Mitsui Engineering & Shipbuilding Arabia Ltd. (MESAR)
Owner	NAMA, KSA
Project Duration	15 months (Jan 96 - Mar 97)
Participation	QA/QC Manager
Scope	<p>Construction Works:</p> <ul style="list-style-type: none"> ▪ 3.050 m³ concrete pouring 780 ton steel erection, ▪ 420 ton equipment installation, ▪ 133 ton piping prefabrication and erection works (21.000 WDI), ▪ 18.000 m² painting works, ▪ All precommissioning activities and site assistance to commissioning team.

Pipe Line Projects

GREAT MAN-MADE RIVER BINGAZI SECTION CATHODIC PROTECTION WORKS

Location	Bingazi-Tazerbo, Libia
EPC Contractor	GAMA Endüstri AŞ
Client	Marubeni, Japan
Owner	GMR Authority, Libia
Project Duration	21 months (Mar 02 - Dec 03)
Participation	Site Manager
Scope	<div>EPC Works for overall cathodic protection works includes;</div> <ul style="list-style-type: none">▪ Engineering Management, Procurement of all Equipment and Systems, Construction Management and Supervision, Commissioning Works▪ 24.175 holes (150 mm, h-8,9 m)▪ 274.000 meter cabling▪ 4.500 m³ gypsum-bentonite mixture▪ Total 148 km pipeline



DISI AMMAN WATER CONVEYANCE LINE PROJECT

Location	Mudawarra-Amman, Jordan
EPC Contractor	GAMA Power Systems
Client	GAMA Energy Water International B.V
PMC	Halcrow
Project Duration	54 months (Jul 09 - Jan 14)
Participation	<div>Board Member of Client</div> <div>Deputy Managing Director</div> <div>Deputy Project Manager of EPC Contractor</div> <ul style="list-style-type: none">▪ EPC Works for overall investment of 100 million m³ water supply per annum includes▪ Engineering Management, Procurement of all Equipment and Systems, Construction Management and Supervision, Commissioning and Start-up Works▪ 55 wells each appr. 550 meter in depth▪ 356 km steel water pipeline▪ 2 pump stations for forwarding
Scope	

Other Industrial Plants



EPCC CEMENT PLANT

Location	Al Khursaniyah, Saudi Arabia
Contractor	GAMA Industry Arabia, KSA
Client	Consortium with Thyssen-Krupp Polysius
Owner	Eastern Province Cement Company, KSA
Project Duration	26 months (Sept 03 - Nov 05)
Participation	Project Engineering for Contractor
Scope	Construction Works: <ul style="list-style-type: none">▪ 37.400 m³ concrete pouring,▪ 4.070ton steel erection,▪ 9.010ton equipment installation,▪ All related electrical and instrument installation works,▪ All precommissioning activities and site assistance to commissioning team.



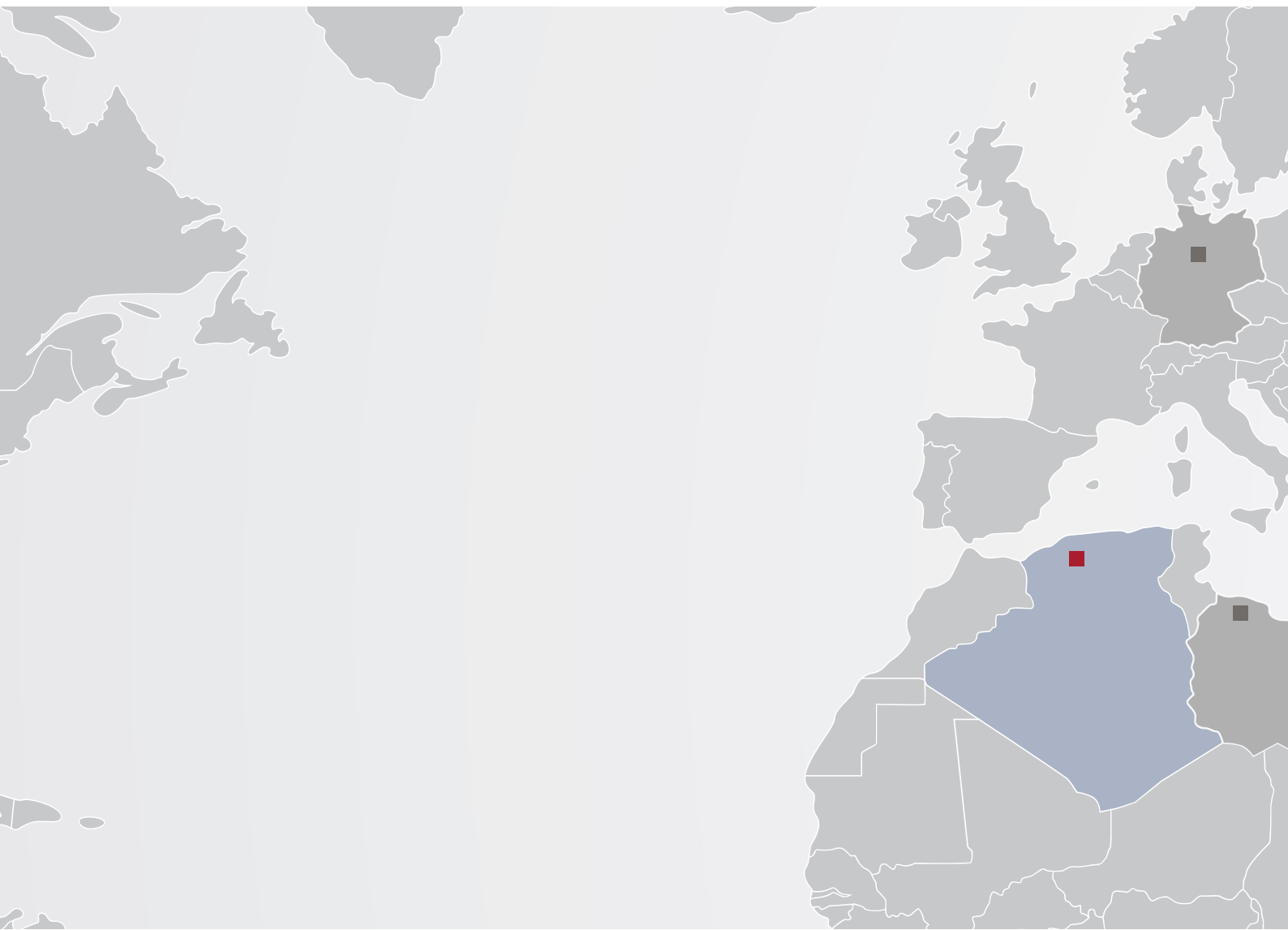
Our Clients

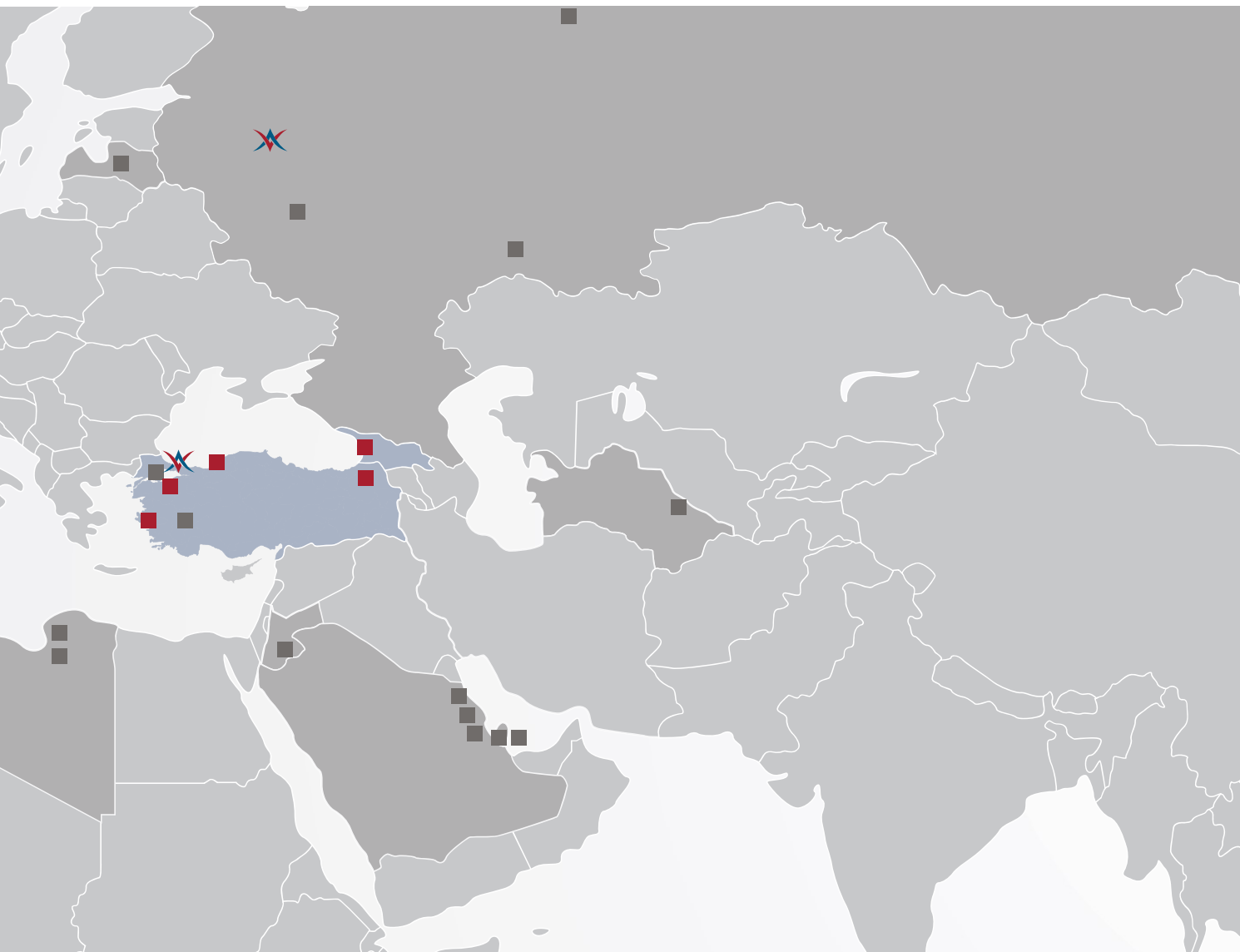
clients we served



World of ABT

locations of our projects





- ABT Projects
- Executive's References



Head Office - İstanbul
Barbaros Mah. Begonya Sok. No:3/124
Nidakule Kuzey 34750
Ataşehir İstanbul / Türkiye

T : +90 216 999 9530
E : info@abtyapi.com

www.abtyapi.com

Moscow Office

E : info@abtyapi.com

www.abtyapi.com